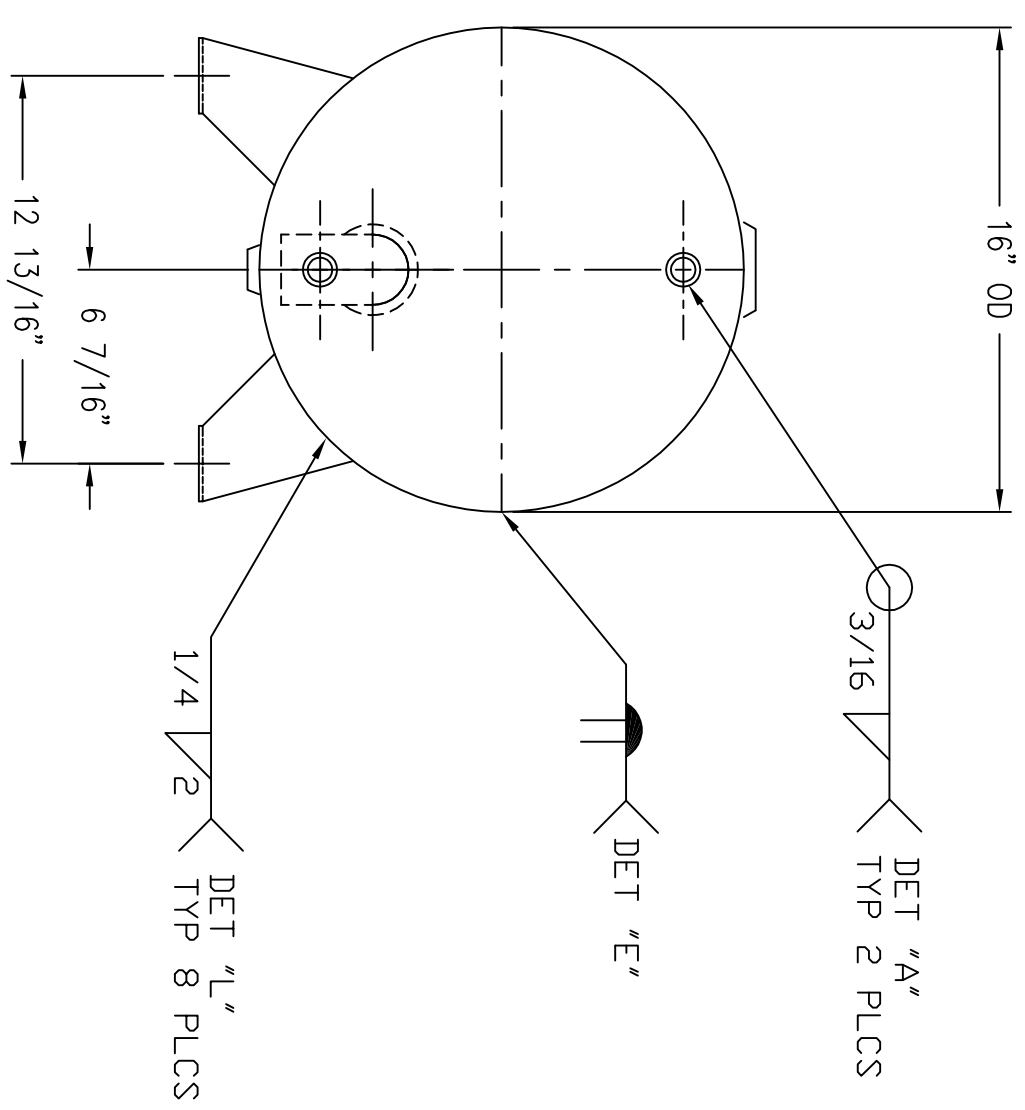
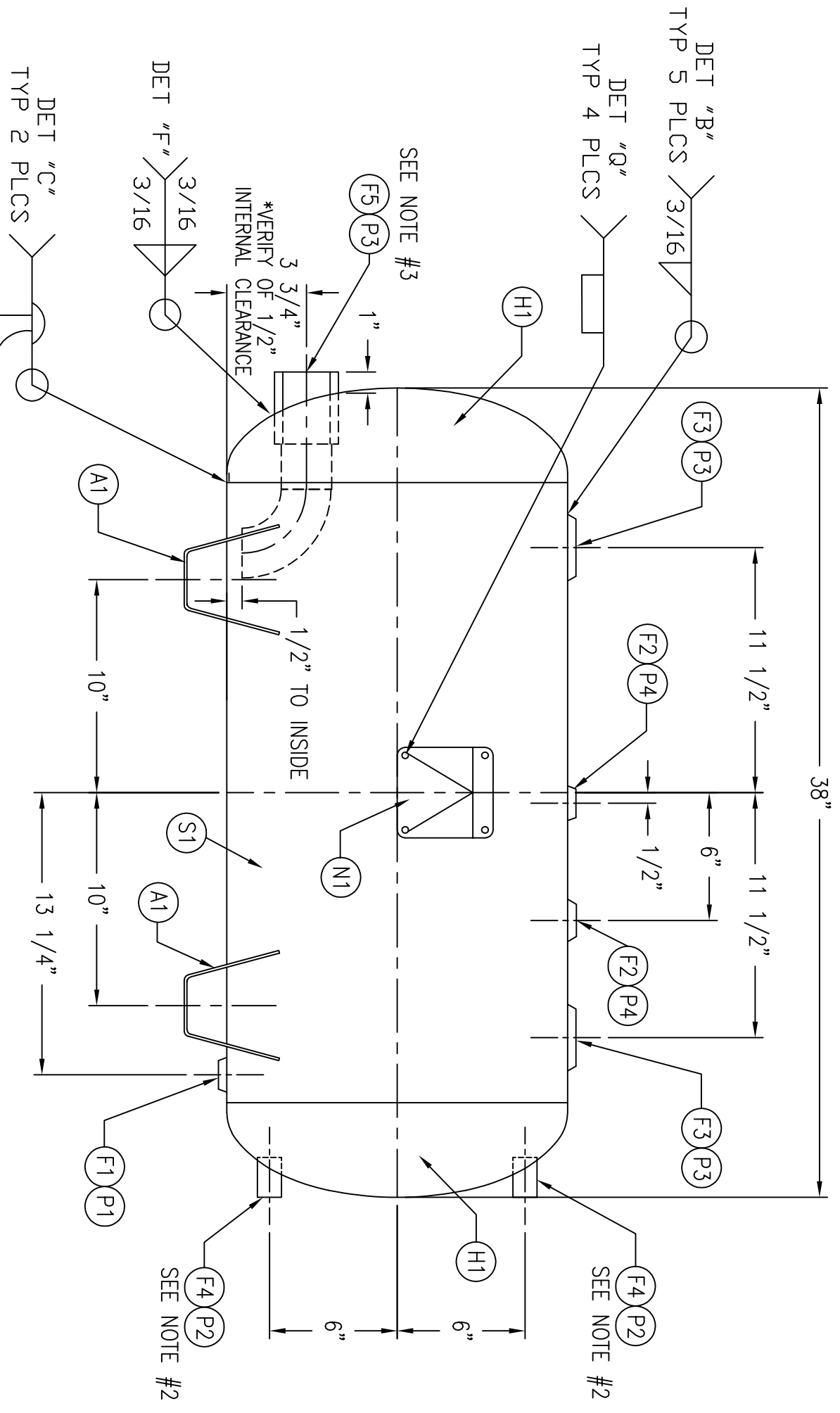


CODE/ADDENDA _____ APPROVED _____
 RELEASED FOR PRODUCTION
 Q.C. _____ DATE _____

NO.	QTY	PART NO.	DESCRIPTION
H1	2	H32011	HEAD: .094 MIN. X 16" O.D.
S1	1	R34495	SHELL: .107 MIN. X 16" O.D.
F1	1	F32267	FLANGE: 1/4" NPT
F2	2	F32270	FLANGE: 1" NPT
F3	2	F30318	FLANGE: 2" NPT RAD
F4	2	F10220	TOE CPLG: 1/2" NPT X 1 7/8"
F5	1	A85730	2" NPT DIP PIPE ASY

NO.	QTY	PART NO.	DESCRIPTION
A1	4	A55819	WING FOOT FOR 16" O.D. TANK
N1	1	A20910	NAMEPLATE: ASME / NB
P1	1	F11850	PLUG: 1/4" PLASTIC
P2	2	F10710	PLUG: 1/2" PLASTIC
P3	3	S10850	PLUG: 2" PLASTIC
P4	2	F10730	PLUG: 1" PLASTIC



SYM	DATE	BY	REVISION	APP
1	4/08	JC	CHANGED MAMP TO 200PSI AND ADJUSTED TOLERANCES	

NOTES

- BAND 4 PER BUNDLE MAX.
- CPLG'S MUST BE IN LINE & PARALLEL TO EACH OTHER, CPLG STICKOUT TO BE EVEN WITH CENTER OF HEAD
- F5 DIP PIPE ASY. MUST BE 1/2" FROM THE INSIDE BOTTOM OF THE TANK.

SPECIFICATIONS

O.D. 16 LGTH. 38
 MAMP: 200 PSI @ 400 °F
 RHO: .094 MAT'L SA414-G
 EXMT: JIG 20 FT TEST 260 PSI
 X-RAY: NONE
 CRN# -----

SH. .107 MAT'L SA414-G
 HD. .094 MAT'L SA414-G
 GAL. 30 SA. 14 ft²
 WGT. 195 # CU. FT. 4
 CORR. ALM. SH 0 HD 0
 CODE: ASME / NB
 PER DATE OF DWG/LAST REV



HORIZONTAL AIR RECEIVER

DRAWN BY	DATE	SCALE:
SN	6/3/04	NONE
APP. BY	DATE	DRAWING NO.
AS	6/14/04	306052