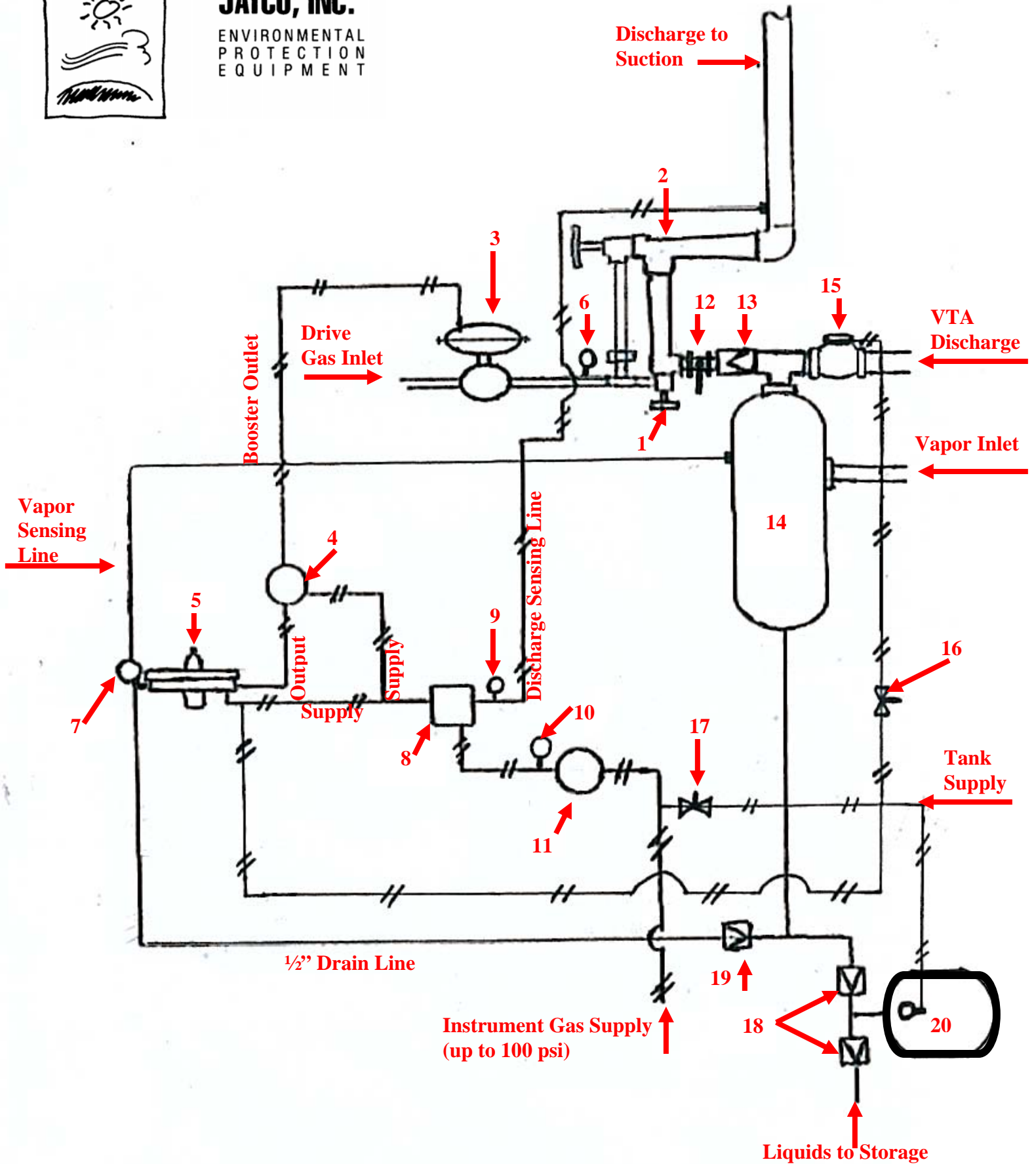




JATCO, INC.
ENVIRONMENTAL
PROTECTION
EQUIPMENT





JATCO, INC.
ENVIRONMENTAL
PROTECTION
EQUIPMENT

JVR Two Stage

- 1) **JATCO first stage stainless steel ejector with adjusting pin**
- 2) **JATCO second stage stainless steel ejector with adjusting pin**
- 3) **Kimray 1400 SMT motor valve**
- 4) **Control Air 6:1 volume booster**
- 5) **Kimray .5 OPRDA controller**
- 6) **0-1000 psi pressure gauge**
- 7) **0-15 oz. pressure gauge**
- 8) **Kimray 12 PGPR shut down pilot**
- 9) **0-60 psi pressure gauge**
- 10) **0-30 psi pressure gauge**
- 11) **Fisher 67 AFR Regulator (set pressure @ 25 psi)**
- 12) **Ball valve 2000 lbs.**
- 13) **Check valve 2000 lbs.**
- 14) **10" x 30" knock-out vessel 2000 lbs.**
- 15) **Kimray 212 SMT motor valve (vent valve)**
- 16) **1/4" block and bleed ball valve (manual shut down)**
- 17) **1/4" Ball valve (tank supply manual shut down)**
- 18) **1" stainless steel check valve**
- 19) **1/2" stainless steel check valve**
- 20) **J-5000cx automatic blow-case (40-100 psi supply)**